

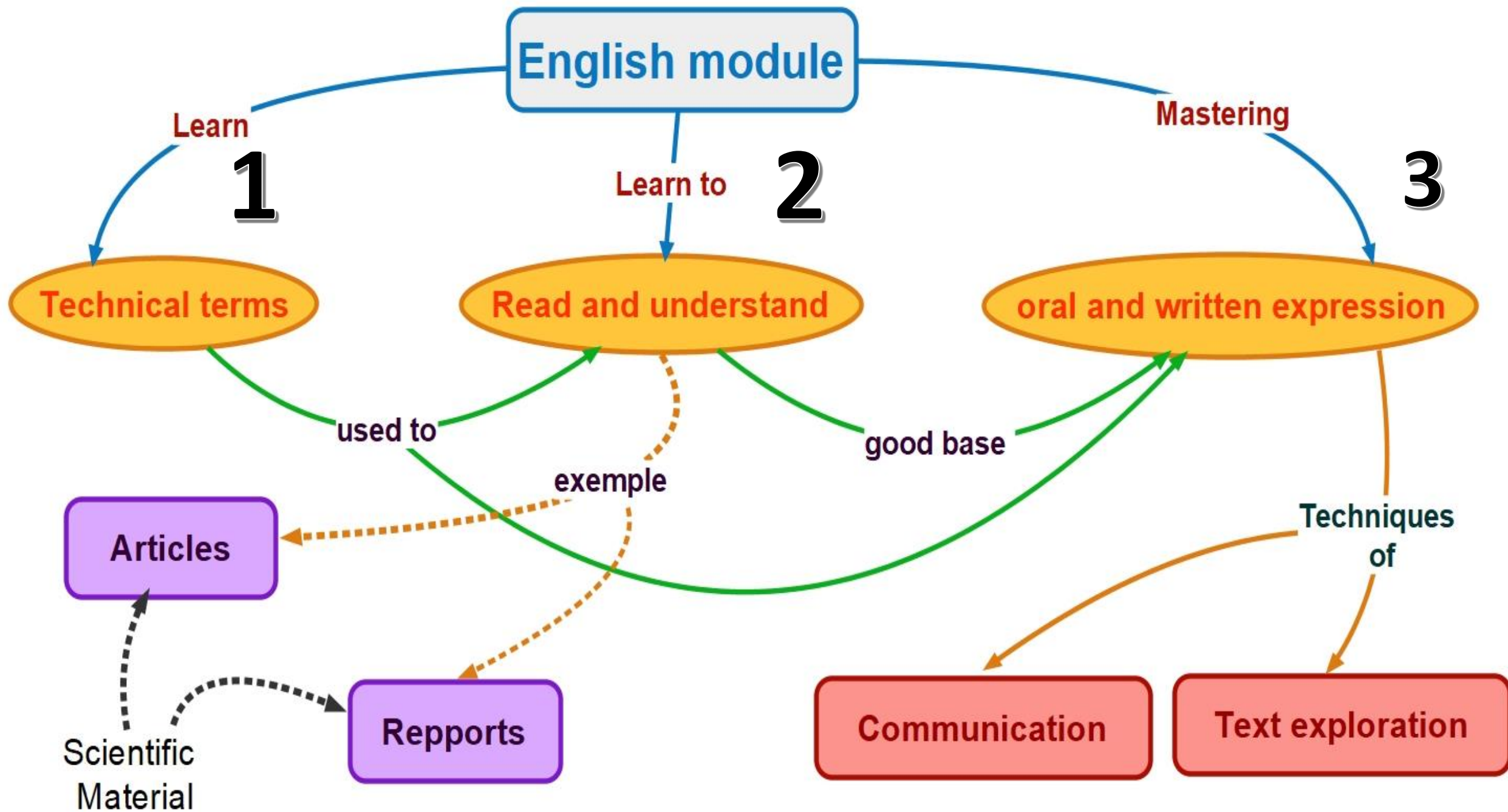
Module: Anglais

Enseigné par: Dr. Nabti I

Crédit: 4

Coefficient: 2

concept Map



Course 1

Technical Terms in Biology

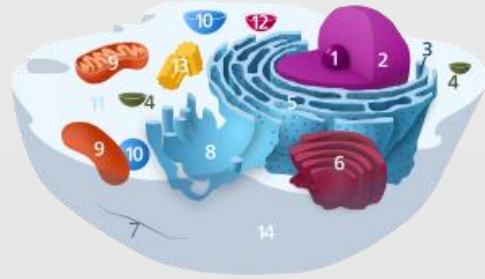
1

Introduction

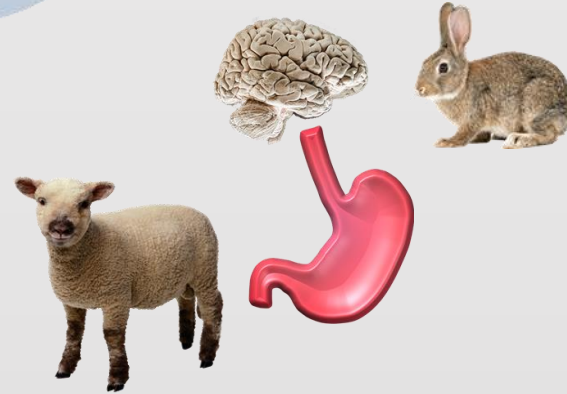
- The student in any field is obliged to know the technical terms
- He will need these words to understand the Courses and to write his reports
- The biology is a large scientific field
- In this course we will learn some important terms the student can need during his formation

Main fields

Cell biology



Zoology



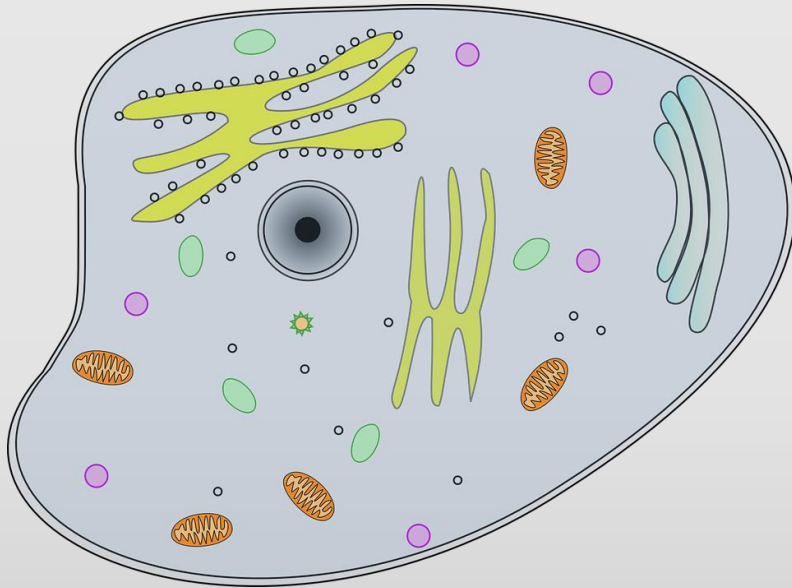
Plant Biology



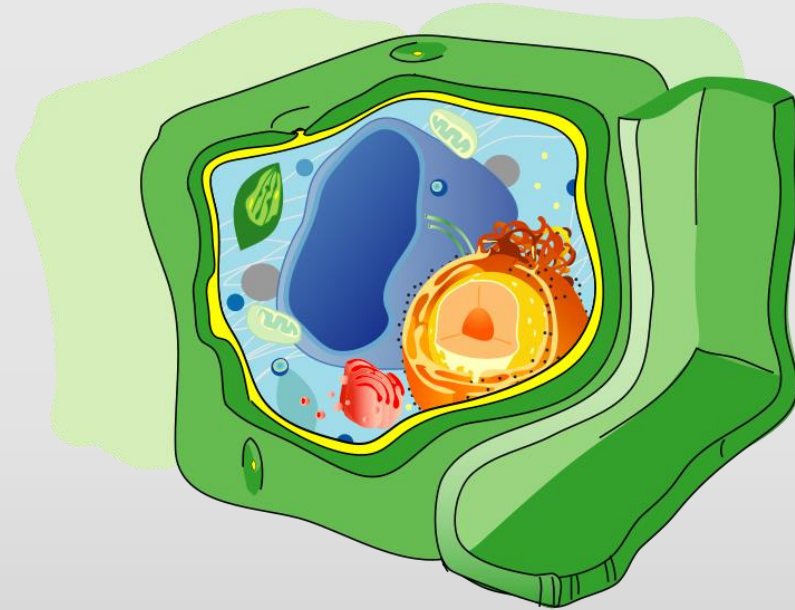
Laboratory



Cell biology



Animal cell



plant cell

Animal cell

Rough endoplasmic reticulum

Nucleus

Lysosome

Smooth endoplasmic reticulum

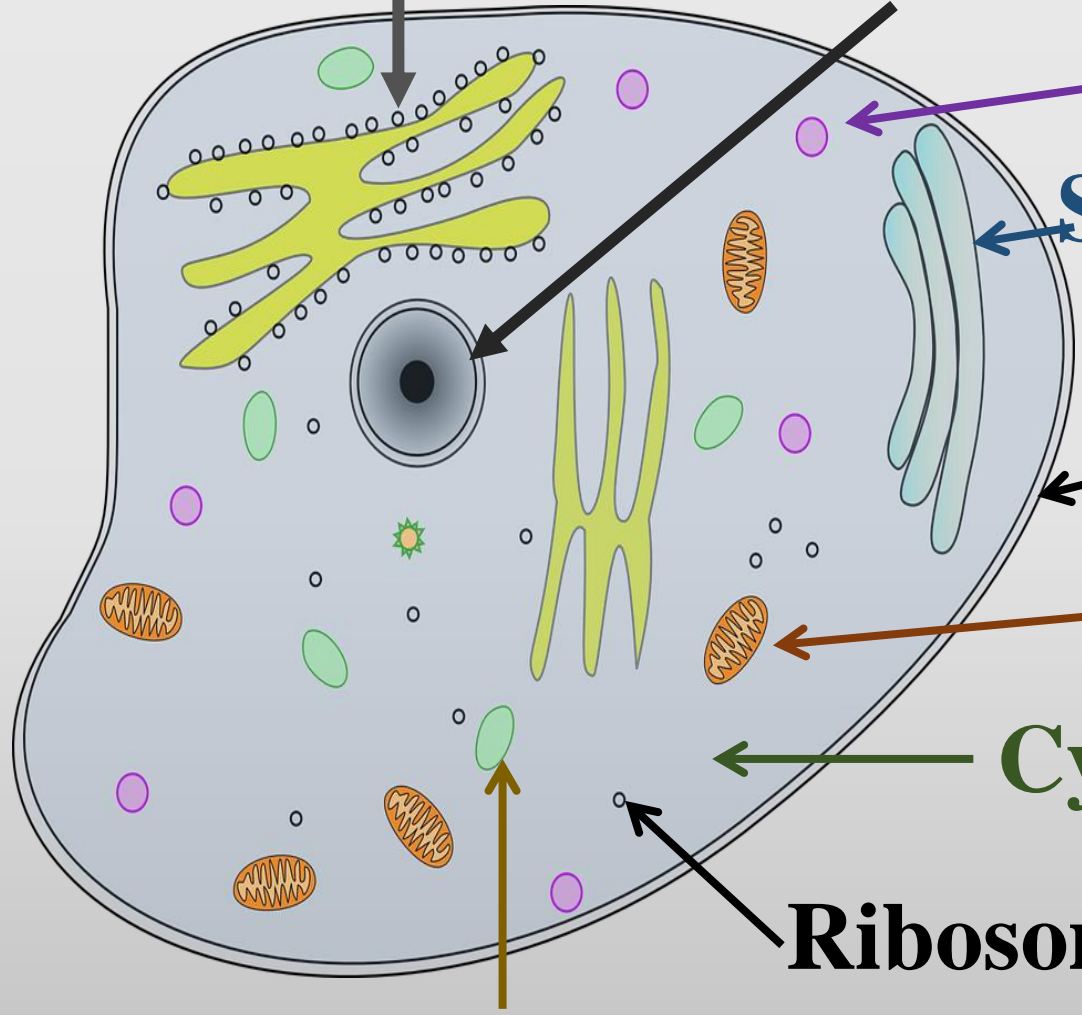
Plasma membrane

Mitochondrion

Cytoplasm

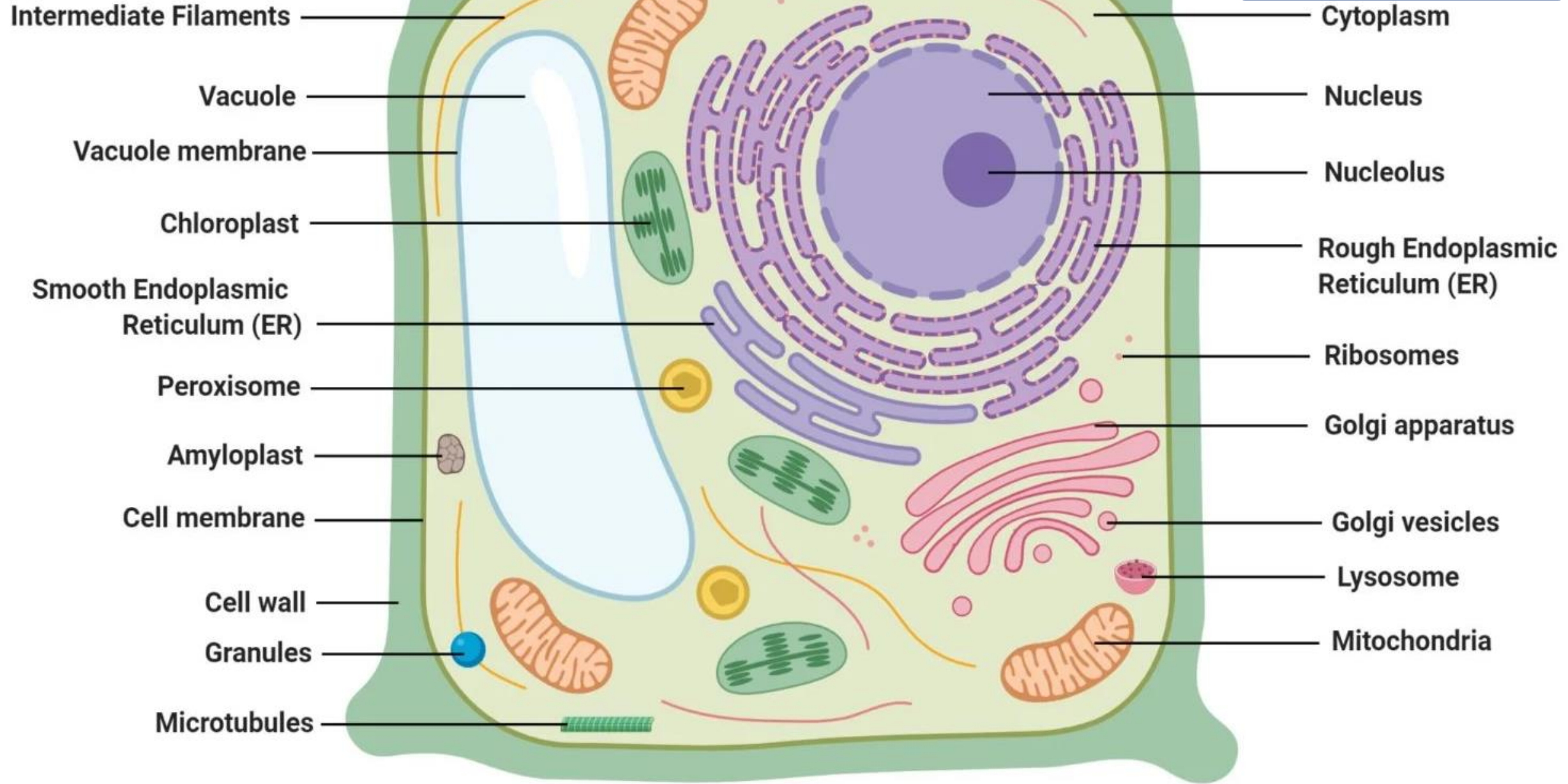
Ribosome

Vacuole

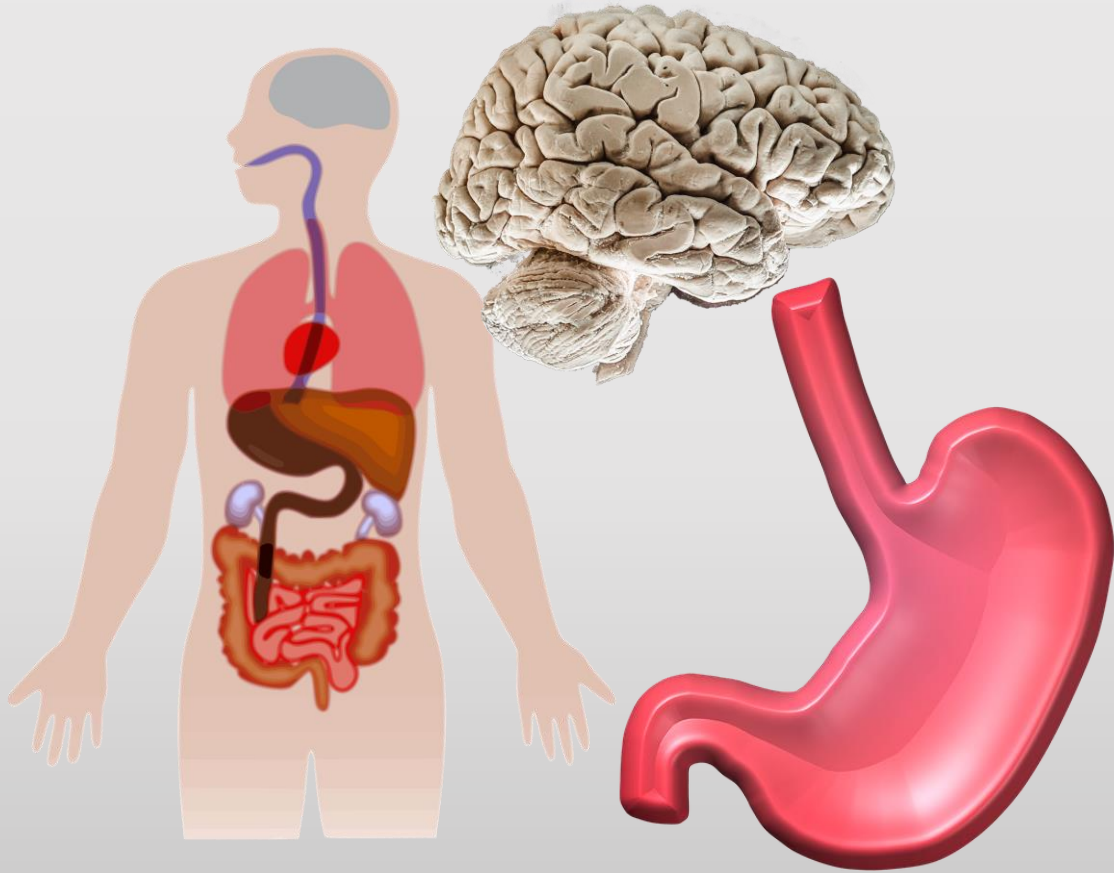


Cell: The fundamental unit of living organisms. **Bounded by**

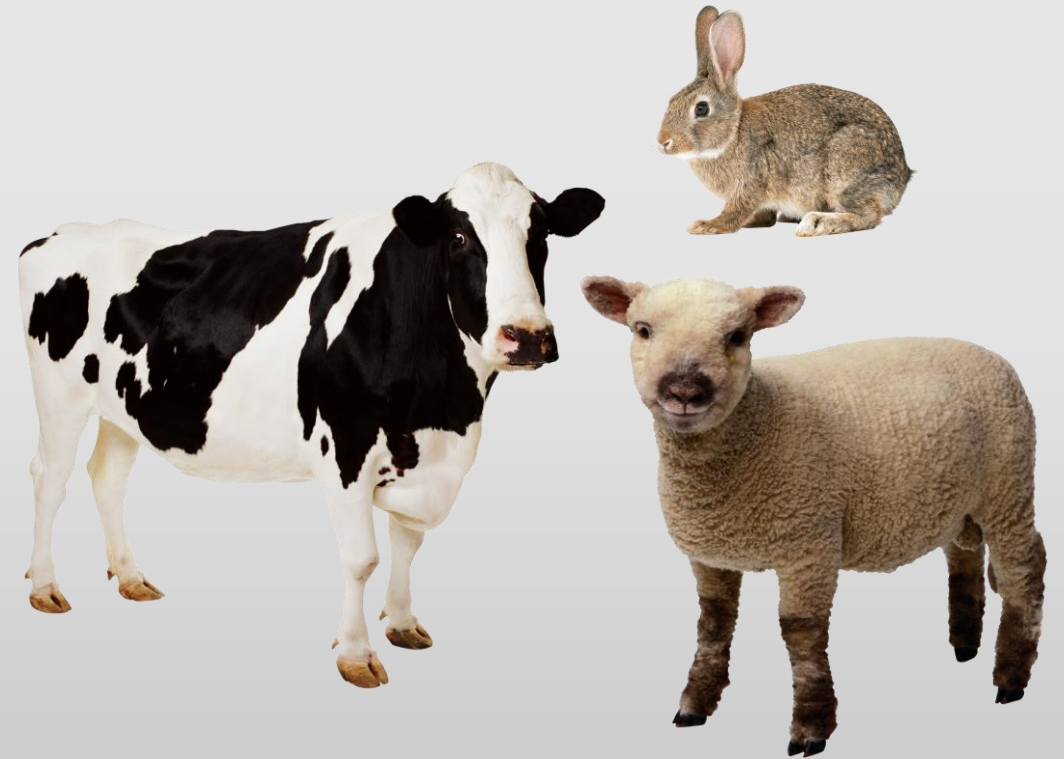
Plant cell



Zoology

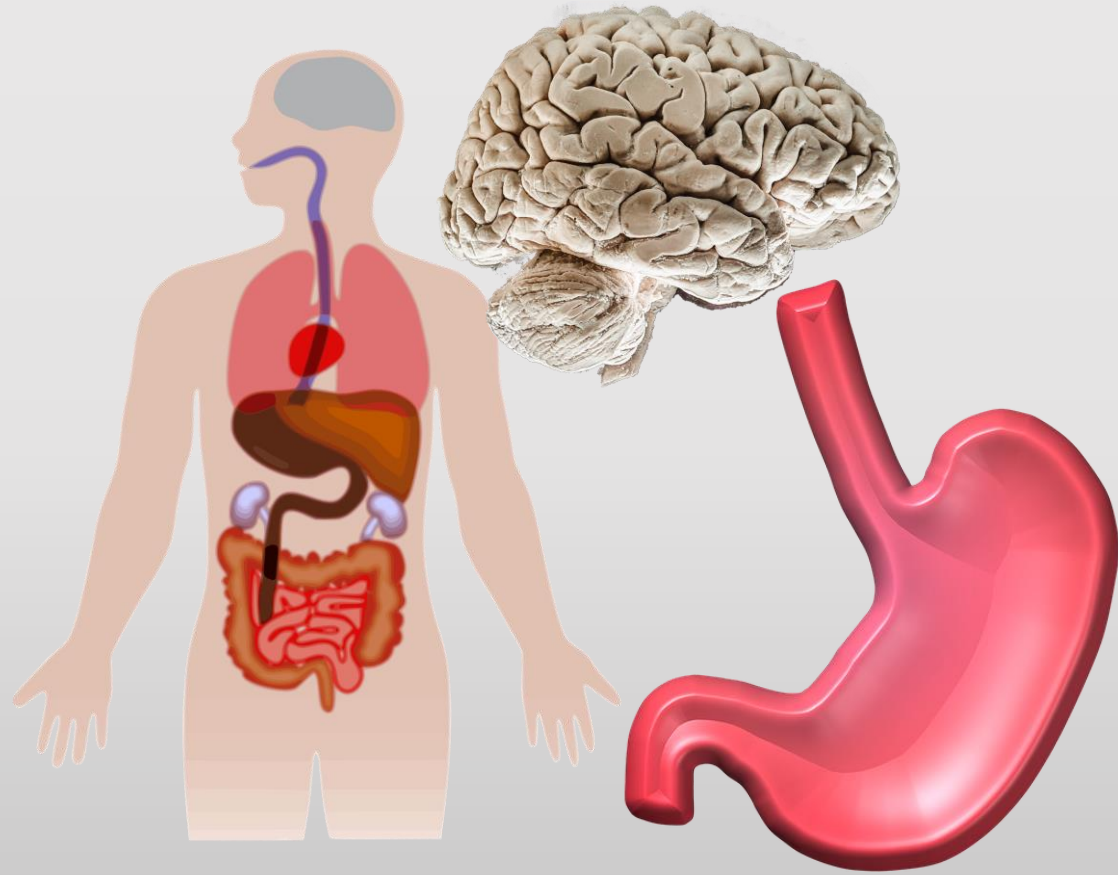


Anatomy



Taxonomy

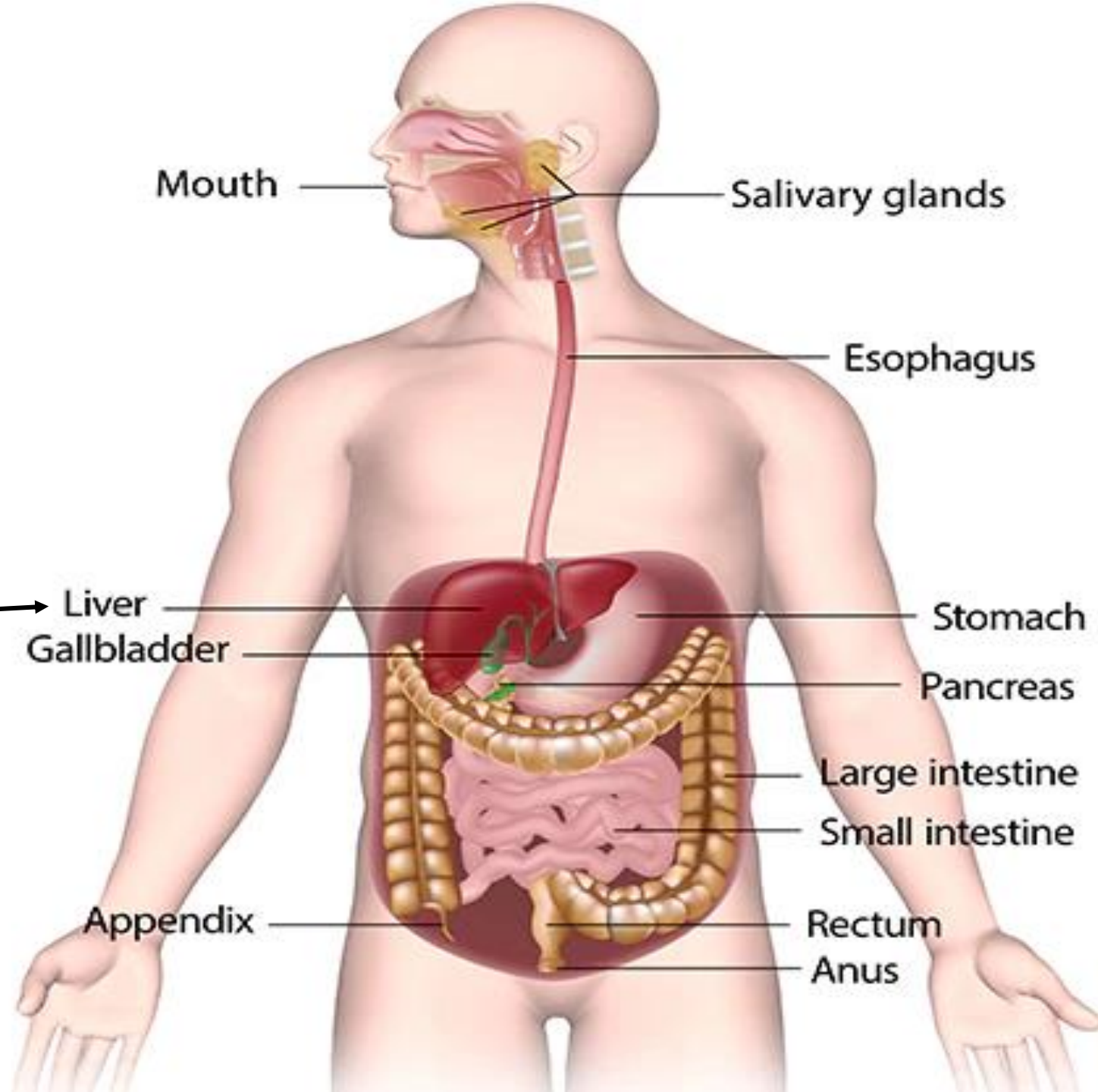
Anatomy



Anatomy

Human Digestive system (Digestive tract)

Hepatic

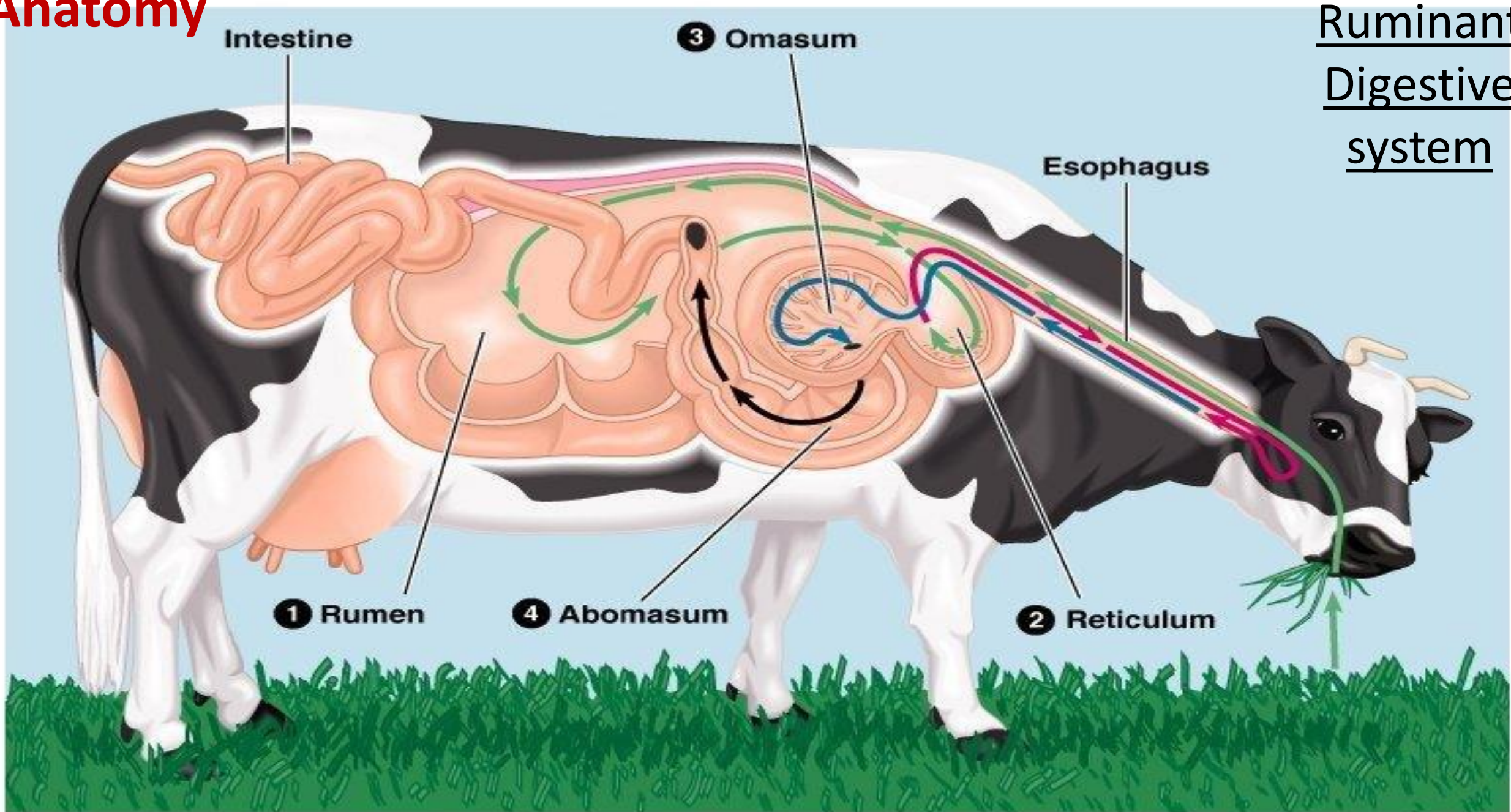


Gastrology
Gastric

Enterology
Enteric

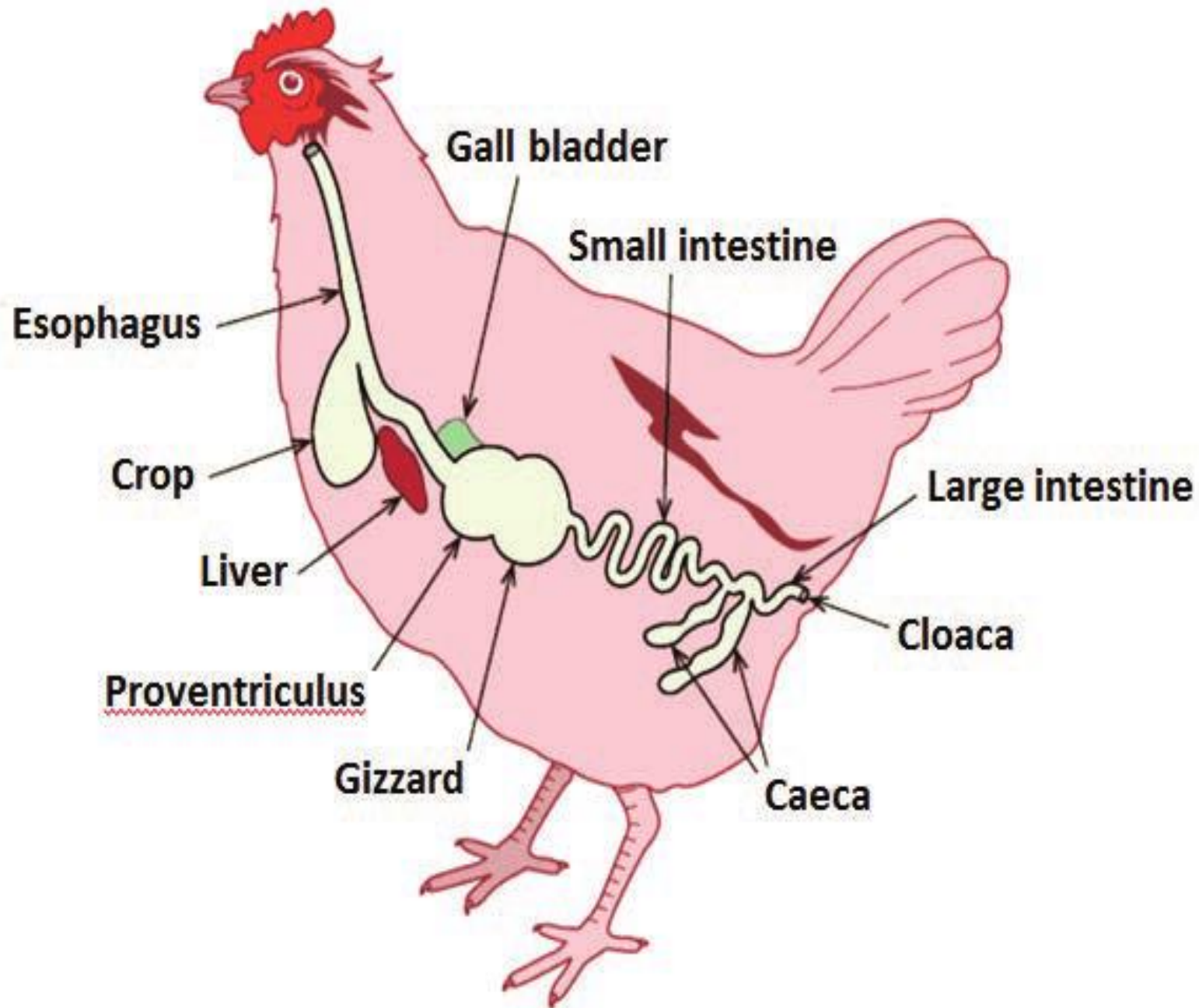
Anatomy

Ruminant Digestive system



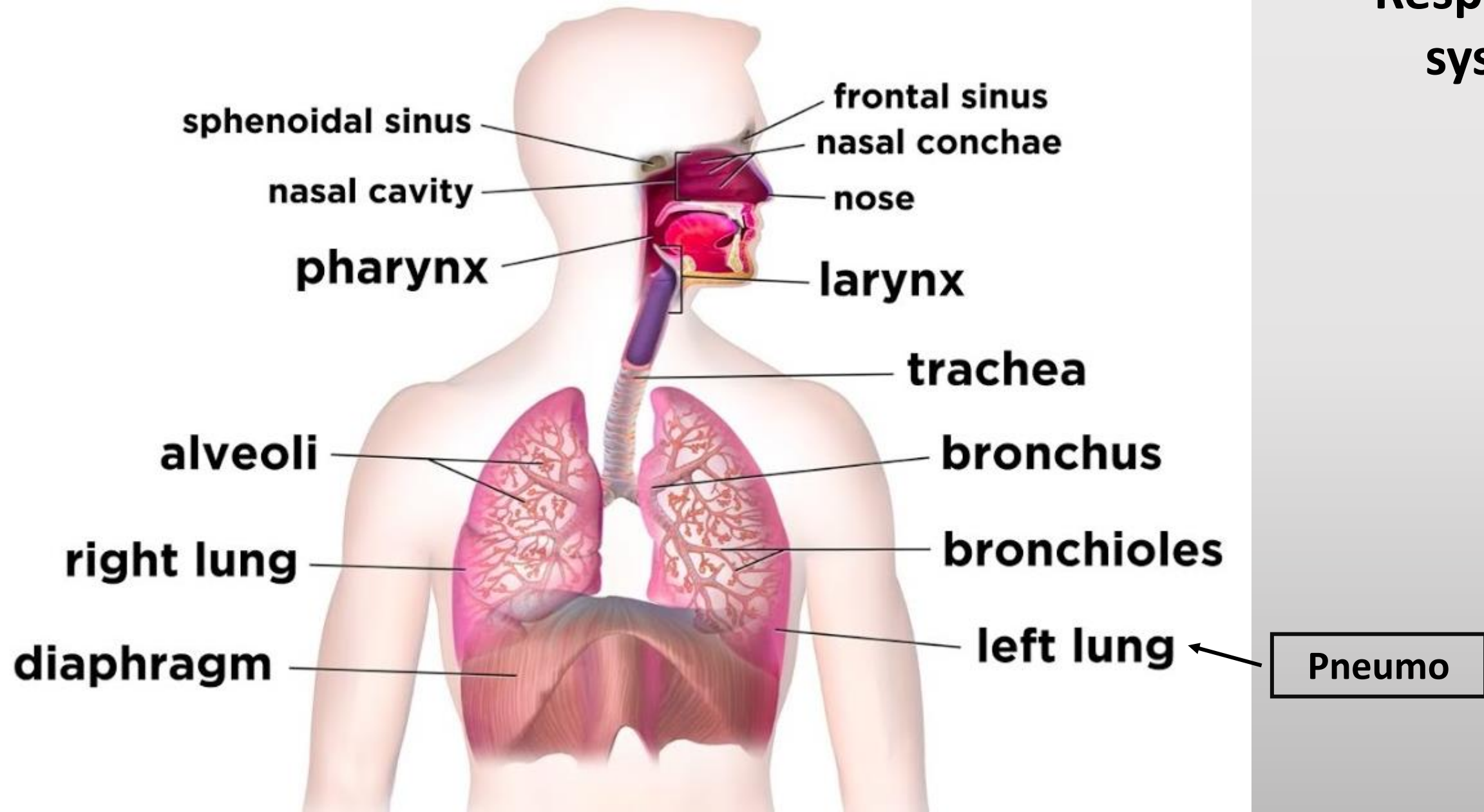
Anatomy

Digestive system of Birds



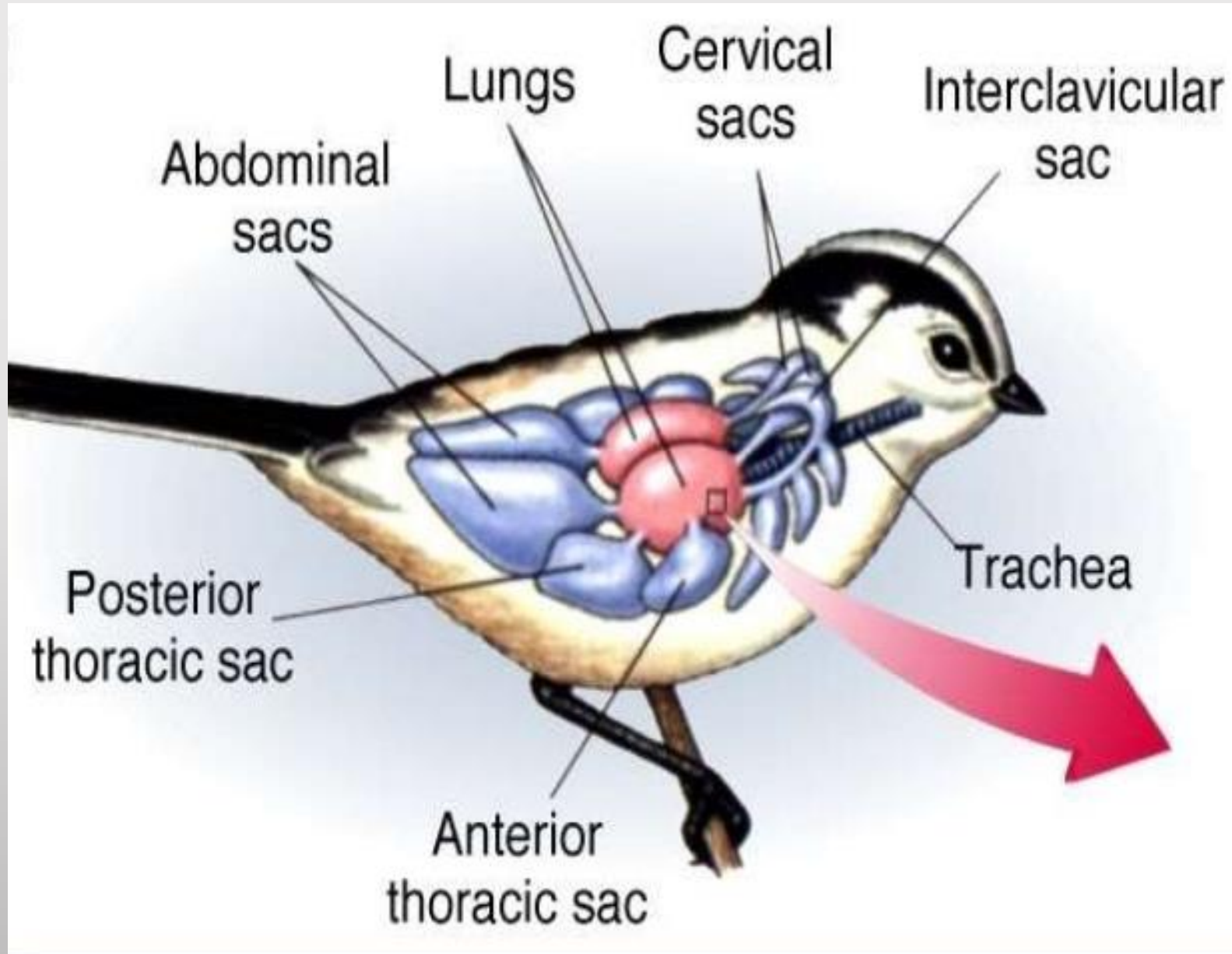
Anatomy

Human Respiratory system



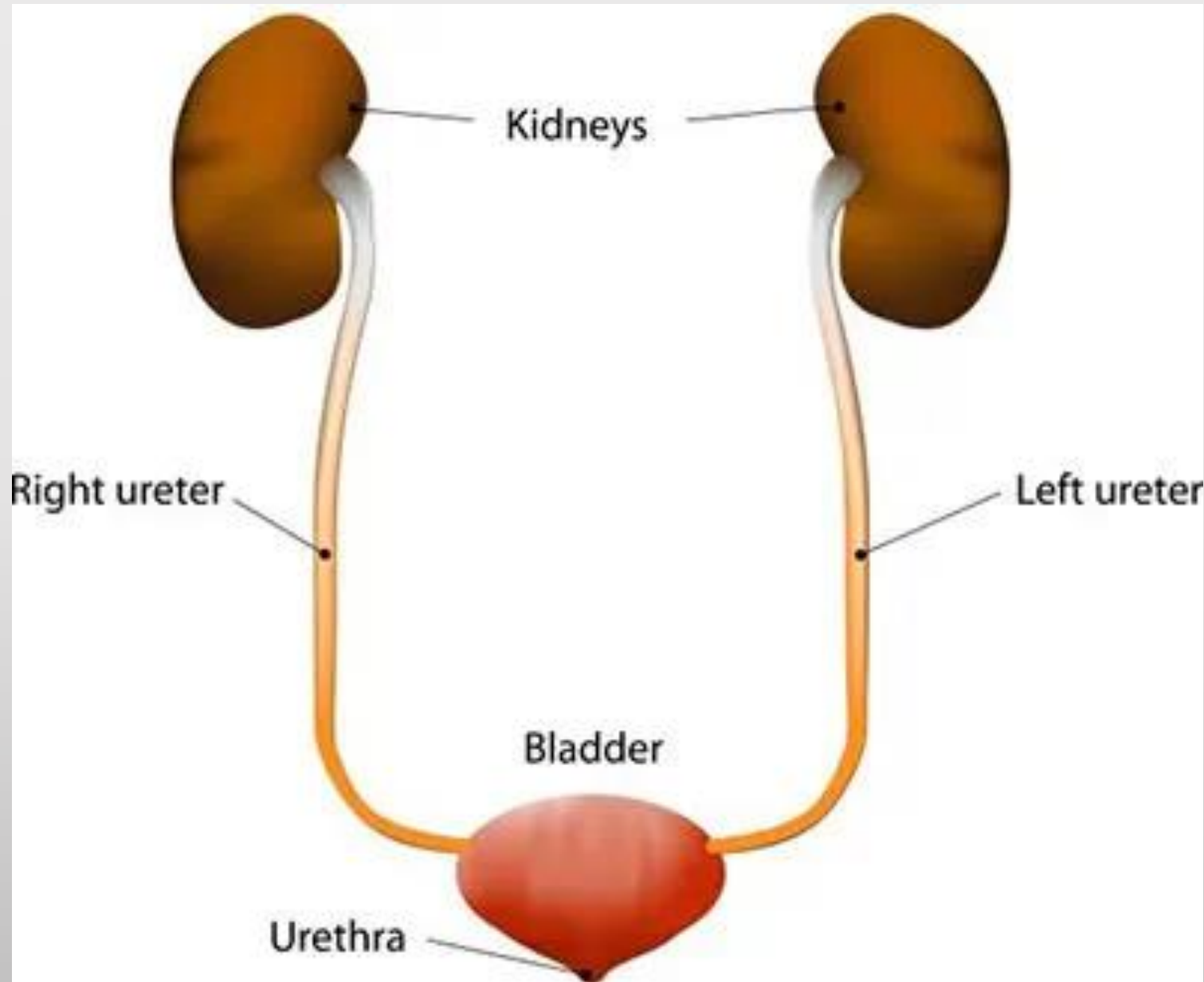
Anatomy

Respiratory system of birds

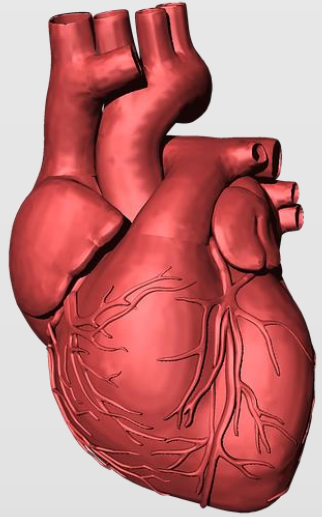


Anatomy

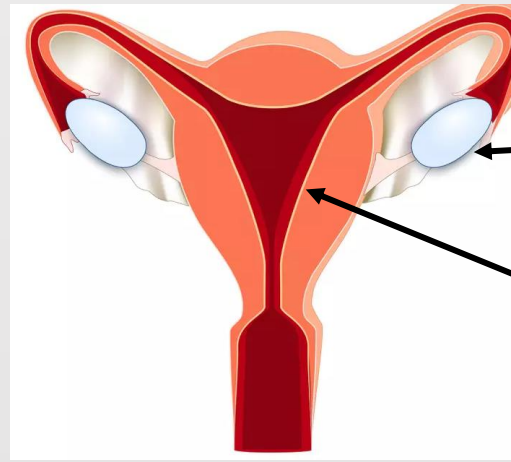
Human Urinary system



Anatomy



Heart
(Cardiac)

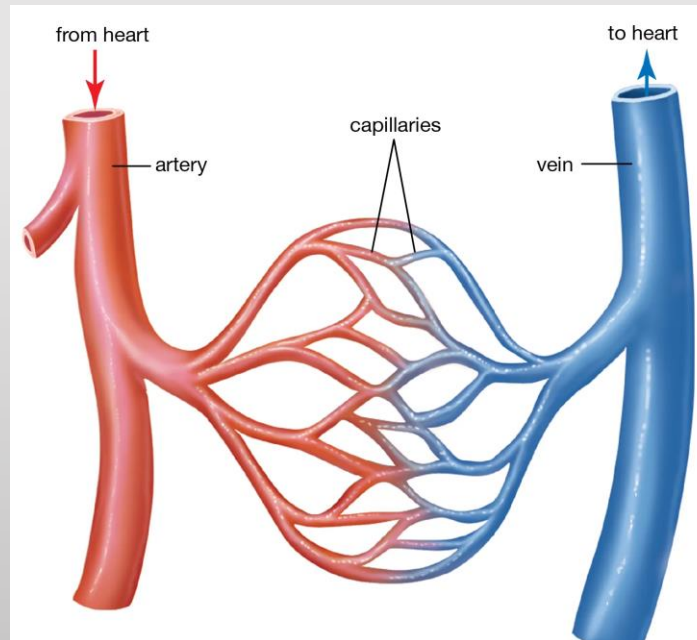


Ovary
Uterus

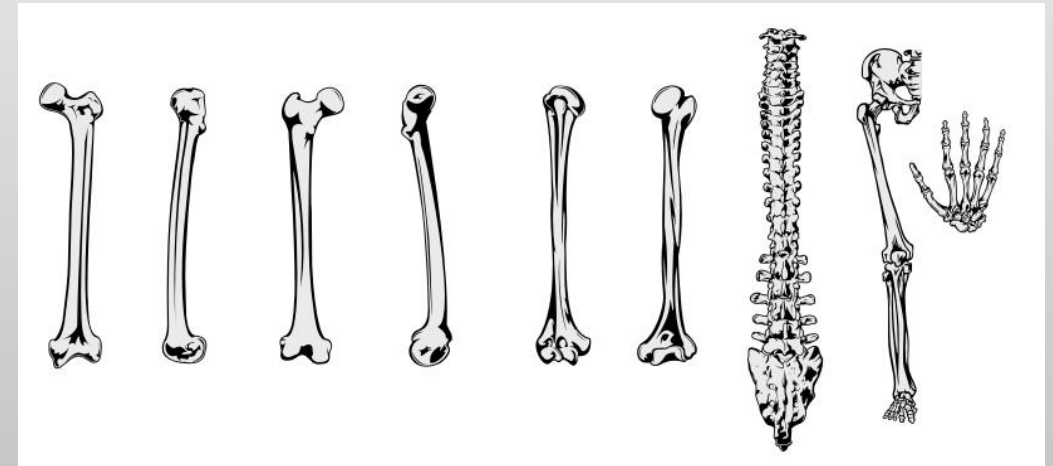
**Other
important
organs**



Brain

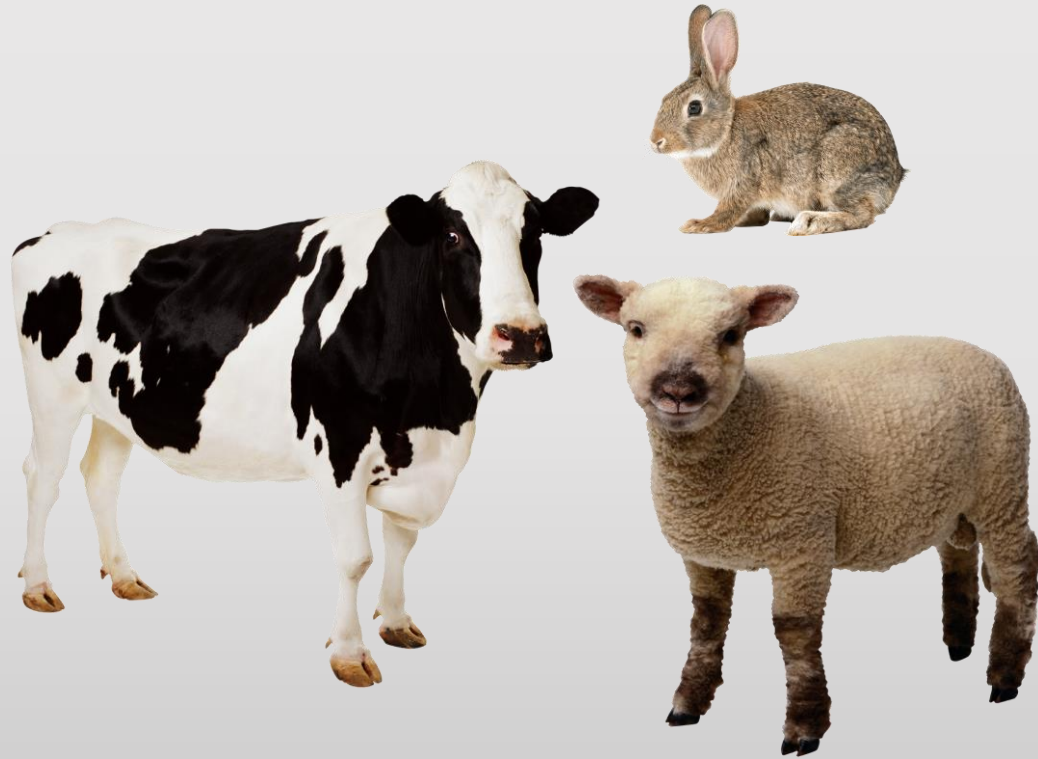


Blood vessels



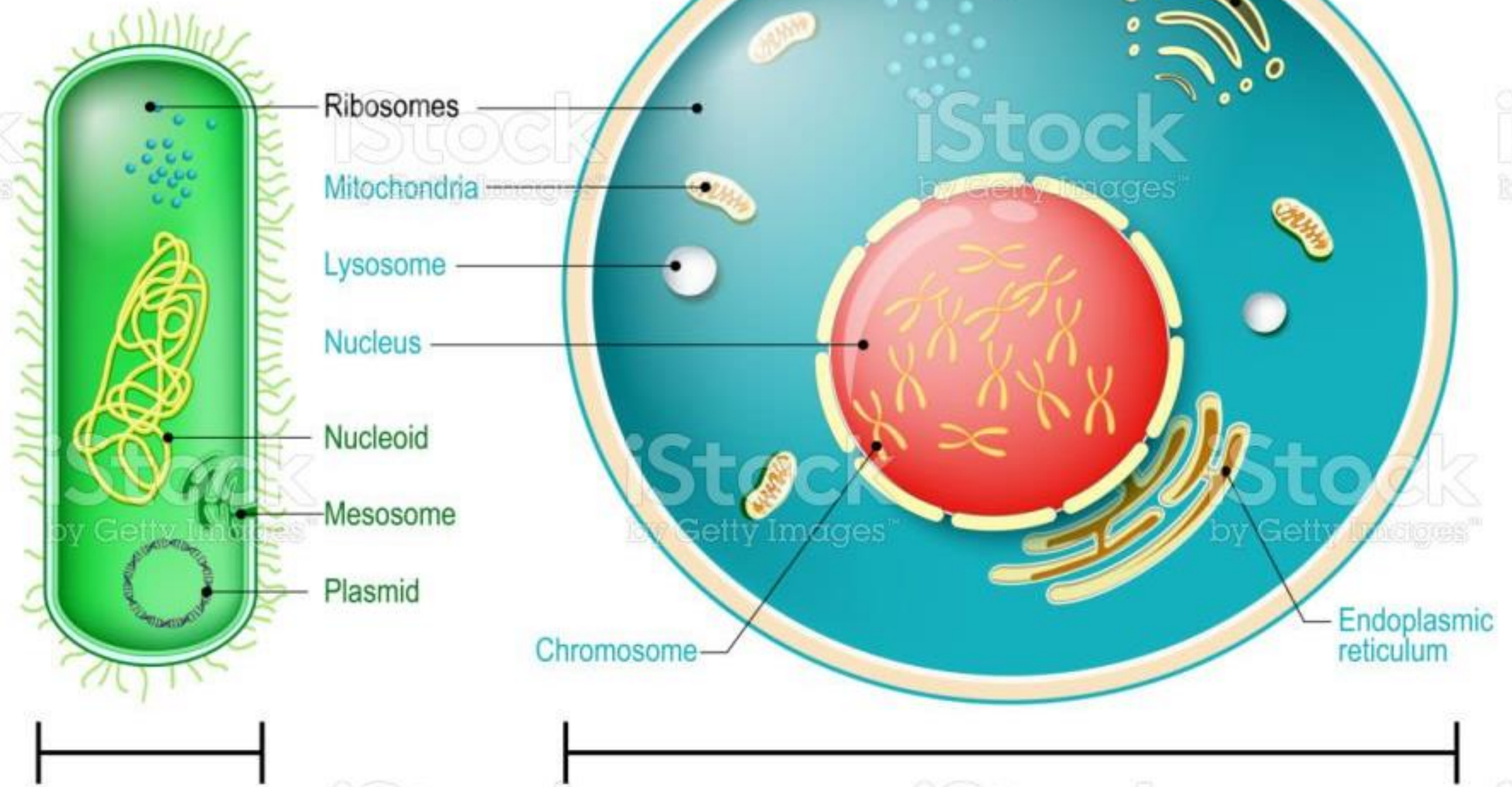
Bones (os)

Taxonomy



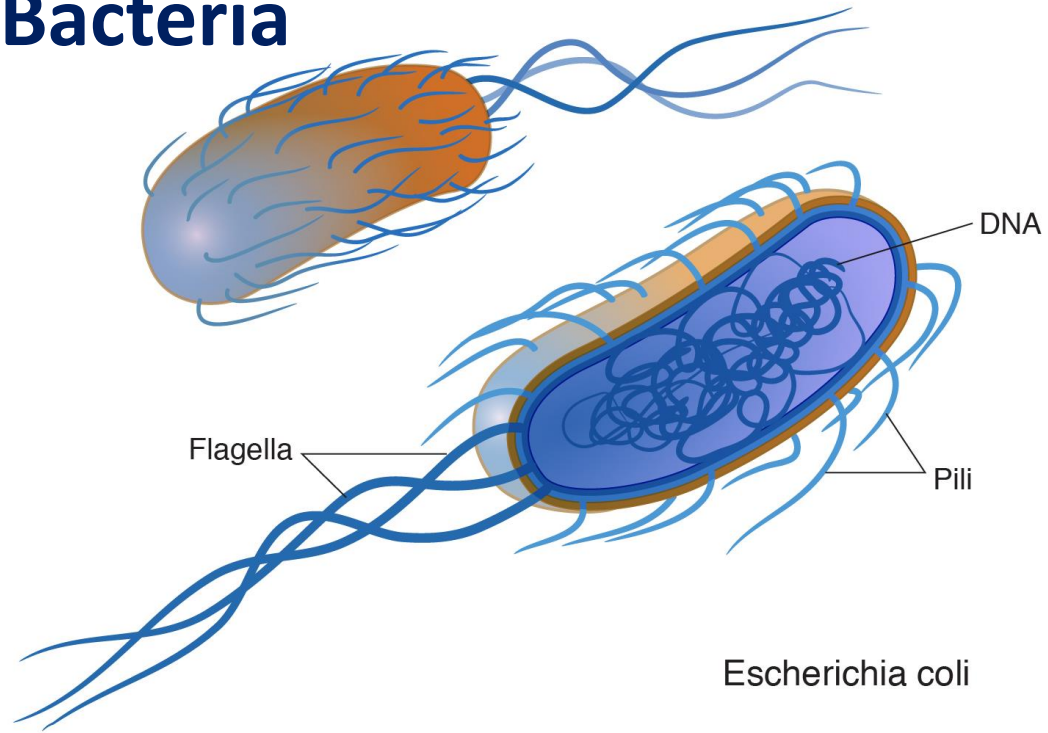
Eukaryote

Prokaryote

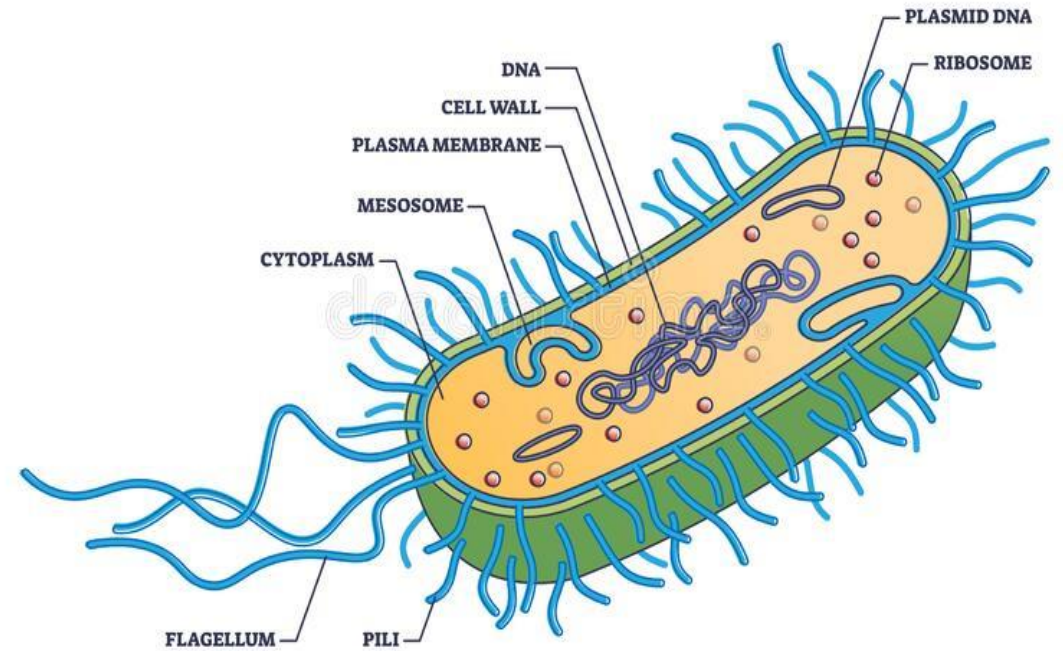


Prokaryote

Bacteria

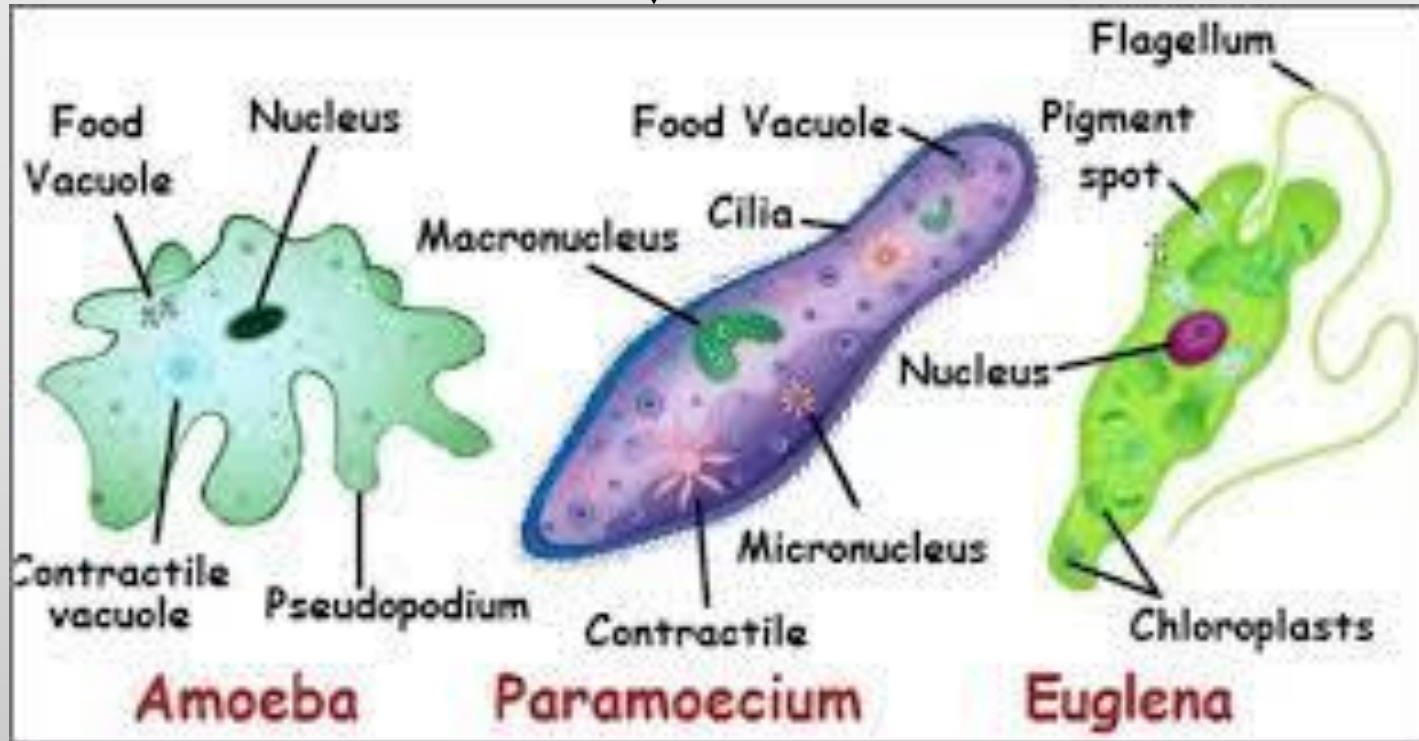


ARCHAEA



Eukaryote

Unicellular organisms



Multicellular organisms

Multicellular organisms



Birds

Avian

Like: The avian virus
Avian diseases

Aviculture

Keeping and breeding birds

Multicellular organisms

TYPES OF FISH



Climbing perch



Clownfish



Cobia



Cod



Coelacanths



Dolphin



Eel



European perch



Flounder



Flying fish



Garfish



Goby fish



Goldfish



Grouper



Guppy



Haddock



Hagfish



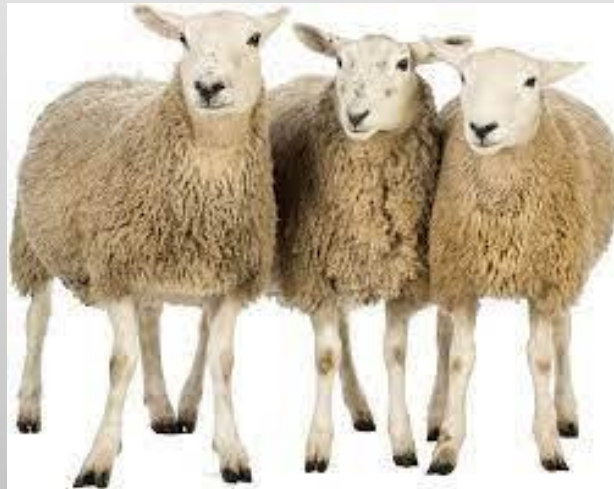
Herring

Pisciculture or aquaculture
commercial breeding of fish

Multicellular organisms



Equine



Ovine



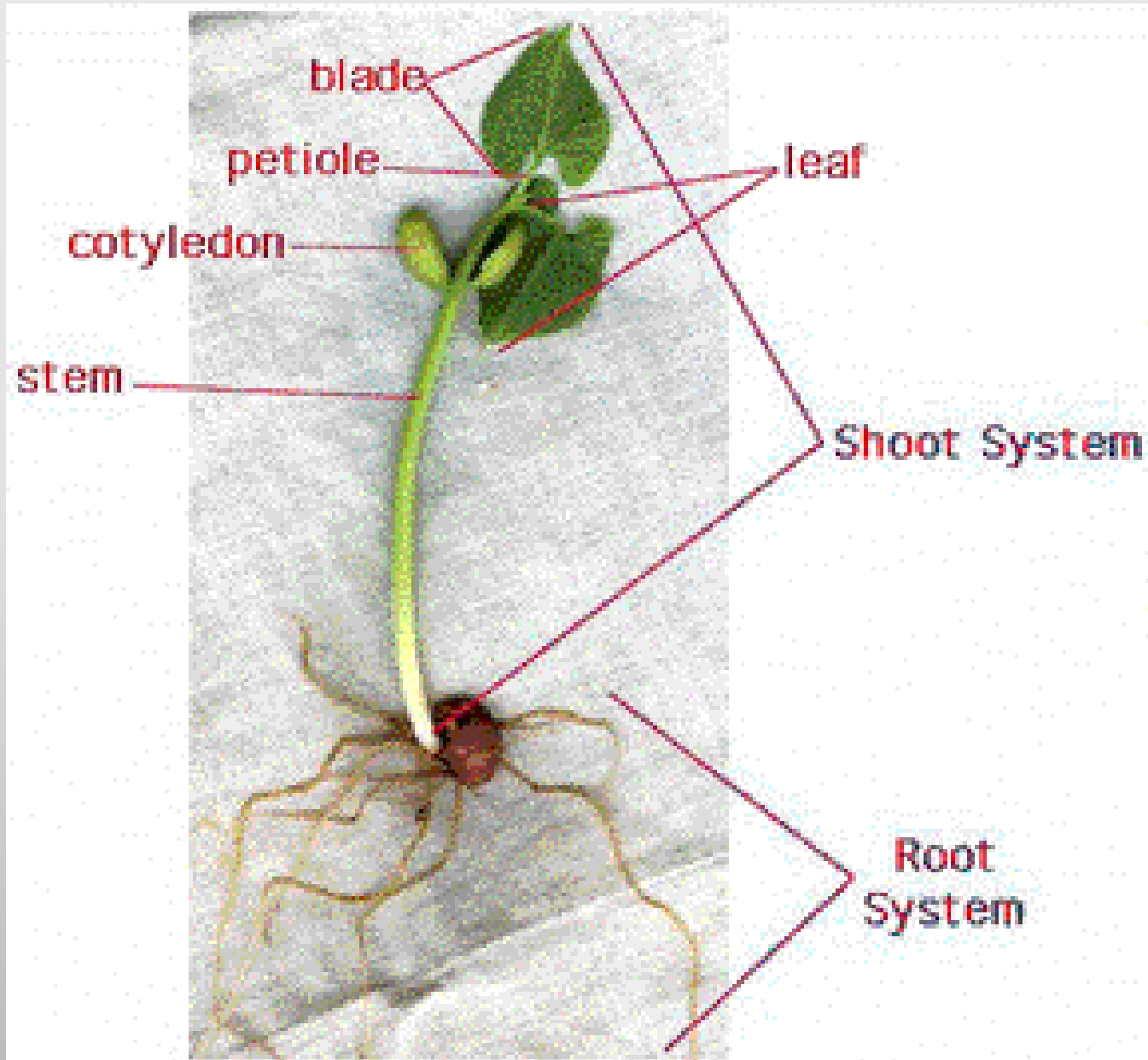
Bovine

Botany

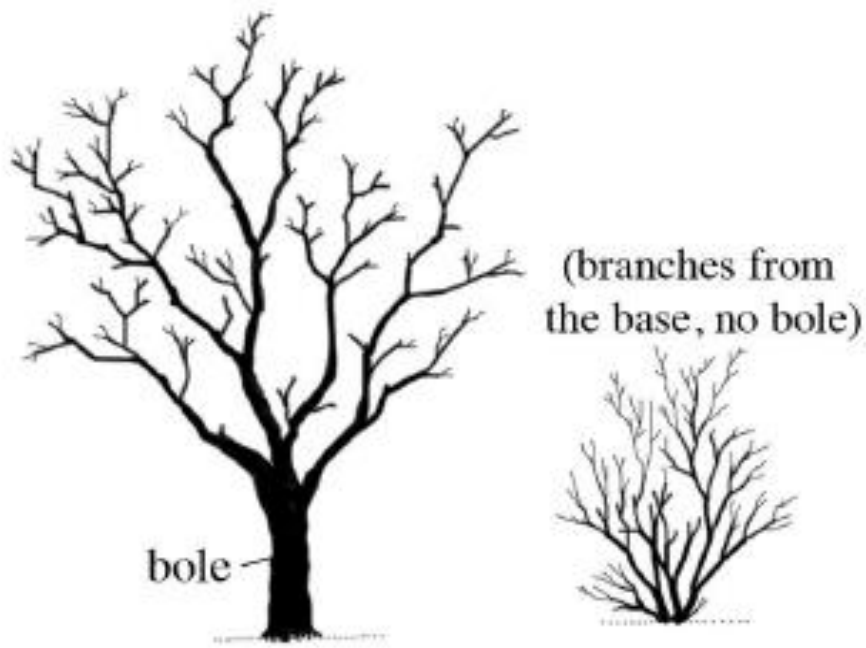
Plant Biology



Anatomy of plant organs



STEM AND ROOT TYPES



TREE

SHRUB

WOODY PLANTS



ASCENDING



DECUMBENT

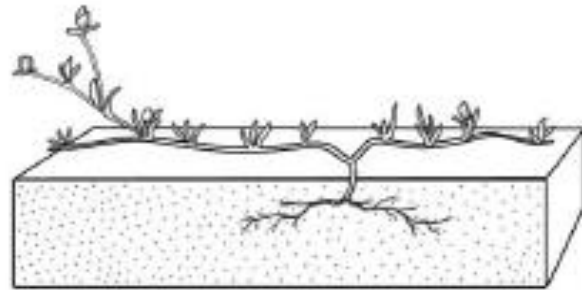


CESPITOSE

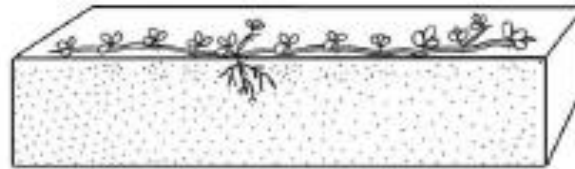


SIMPLE
(ERECT)

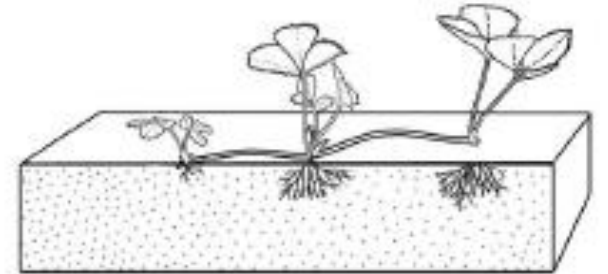
PERENNIAL PLANTS



PROCUMBENT

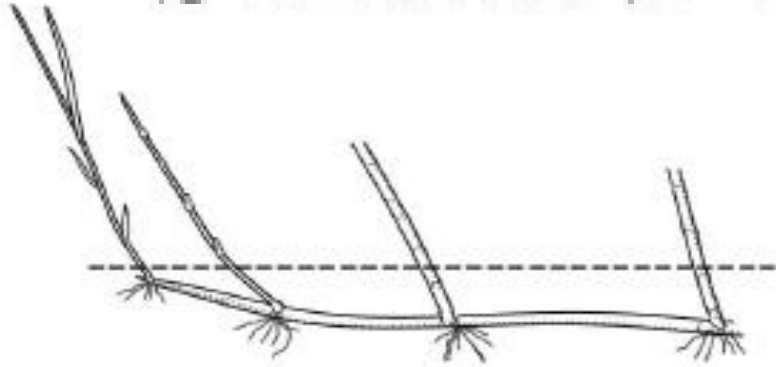


REPENT

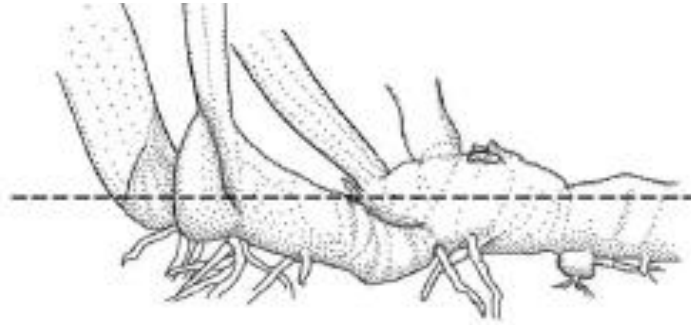


STOLONIFEROUS
(SARMENTOSE)

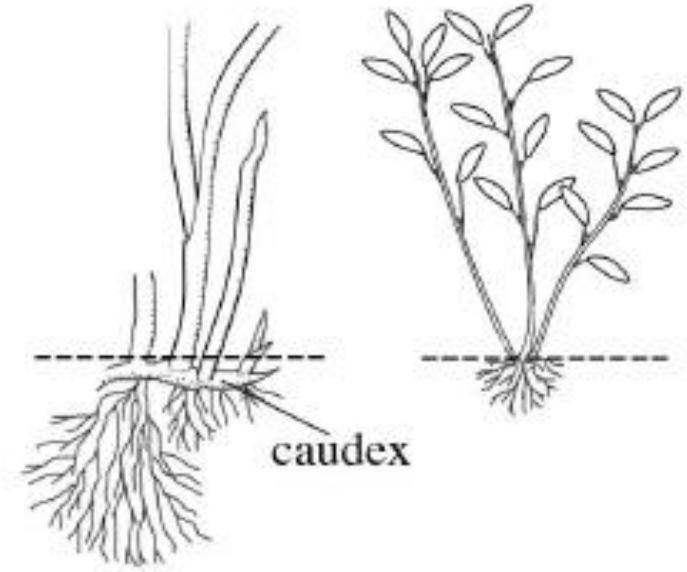
STEM AND ROOT TYPES



STOLONIFEROUS RHIZOME



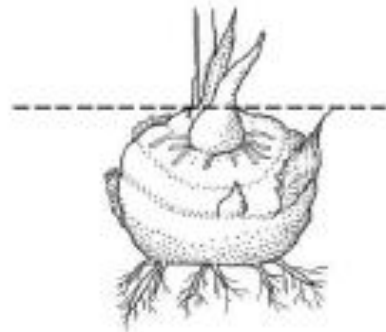
RHIZOME



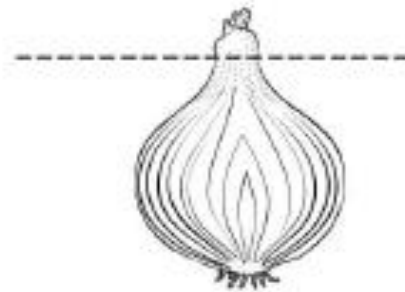
caudex

FIBROUS-
ROOTED
PERENNIAL

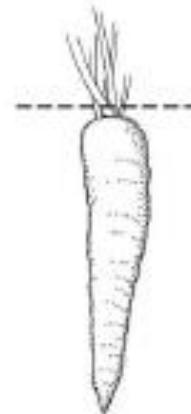
FIBROUS-
ROOTED
ANNUAL



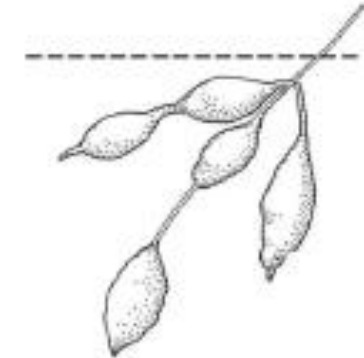
CORM



BULB



TAPROOT



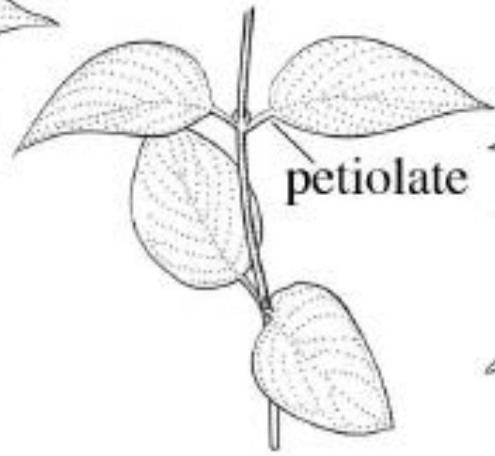
TUBERS

LEAF ARRANGEMENTS AND TYPES



sessile

ALTERNATE



petiolate

OPPOSITE



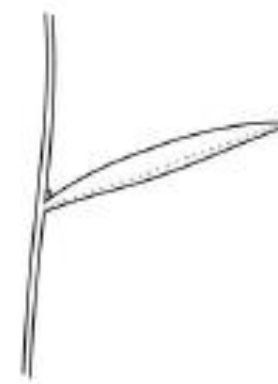
WHORLED



APPRESSED
(ADPRESSED)



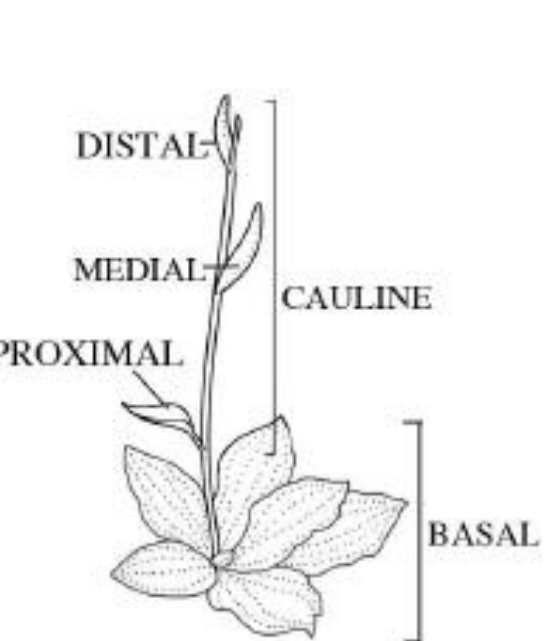
ASCENDING



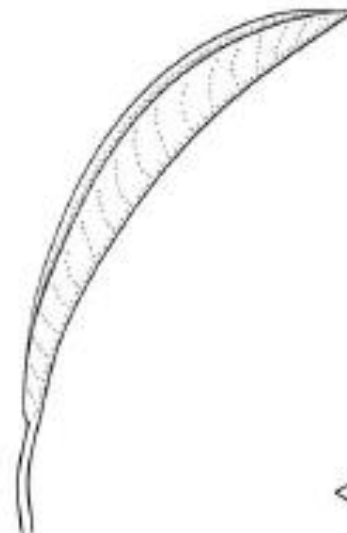
DIVARICATE
(DIVERGENT)



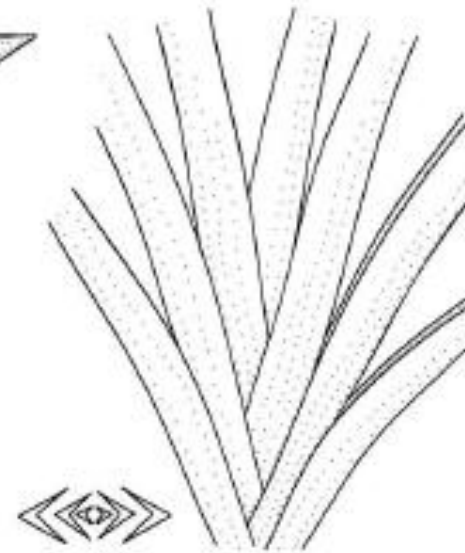
DEFLEXED



SIMPLE



CONDUPPLICATE



EQUITANT



FASCICULATE



IMBRICATE



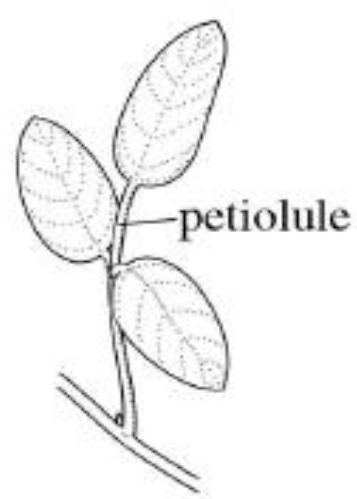
DISTICHOUS



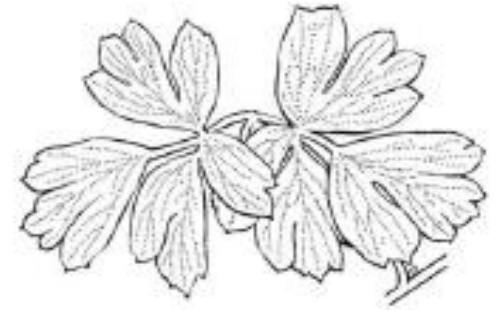
PALMATELY
COMPOUND
(DIGITATE)



PALMATELY
TRIFOLIOLATE
(TERNATE)

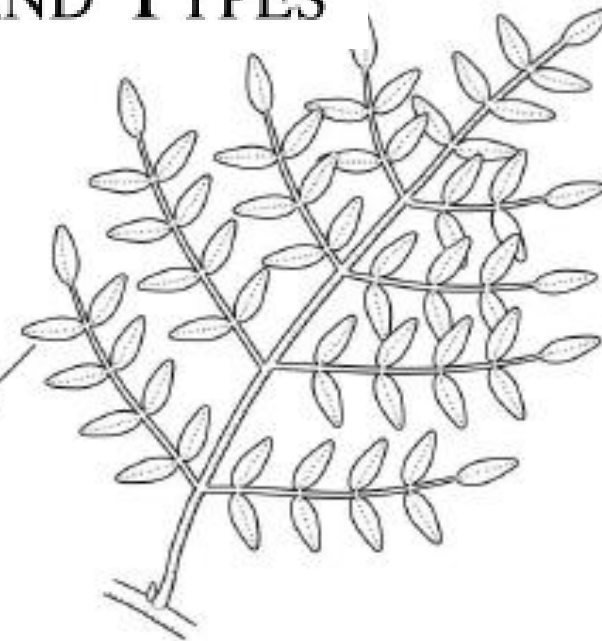
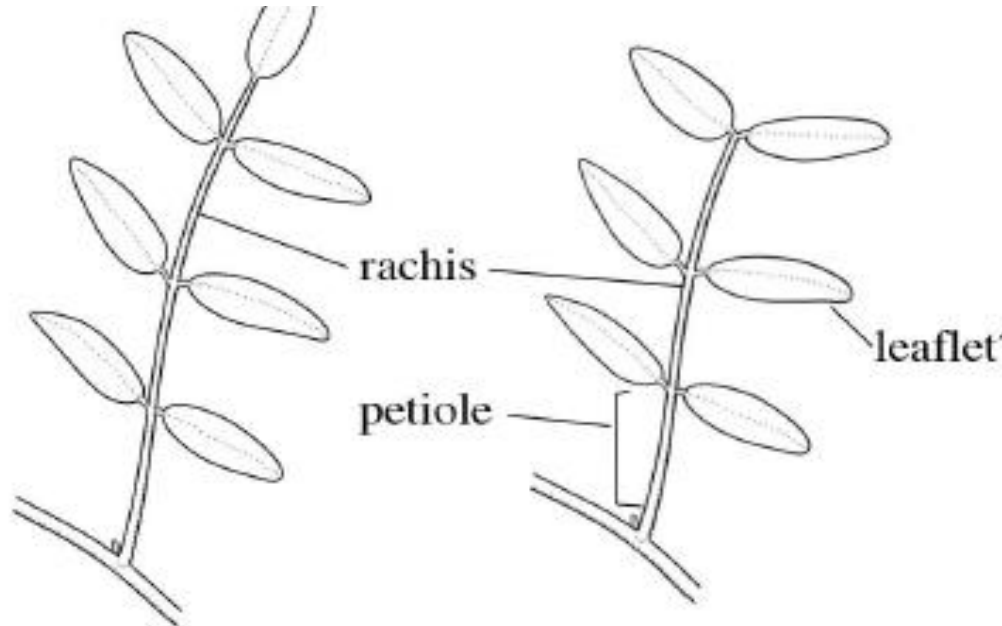


PINNATELY
TRIFOLIOLATE



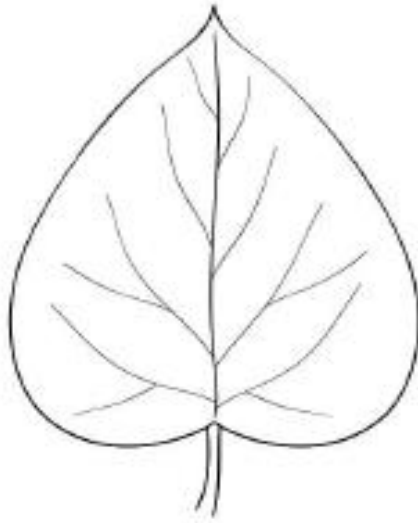
BITERNATE

LEAF ARRANGEMENTS AND TYPES

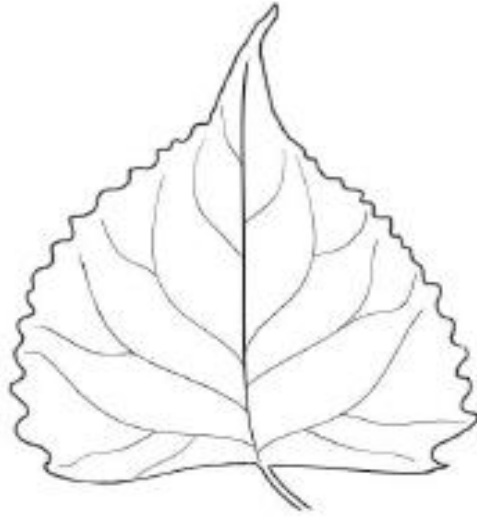




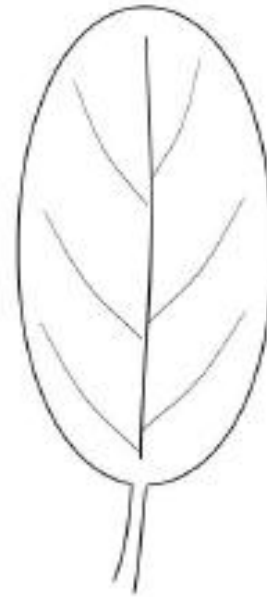
ACICULAR



CORDATE



DELTATE



ELLIPTIC



FALCATE

LEAF SHAPES



HASTATE



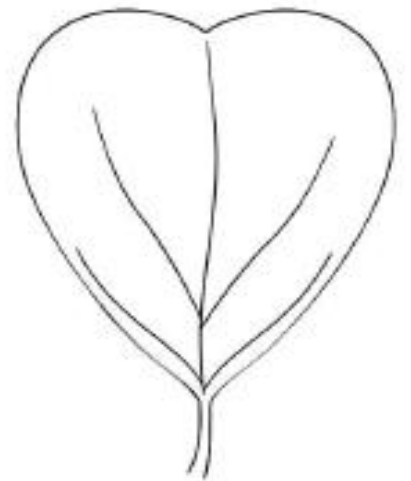
LANCEOLATE



LINEAR



LYRATE



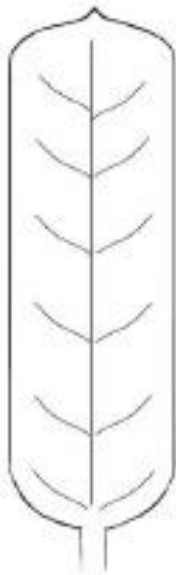
OBCORDATE



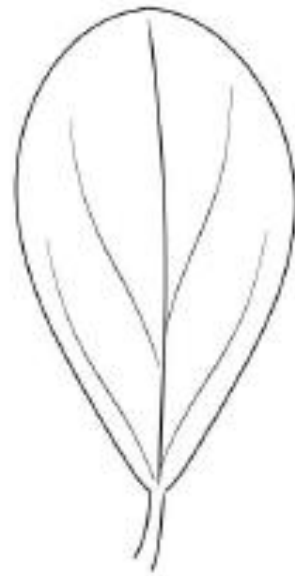
TERETE



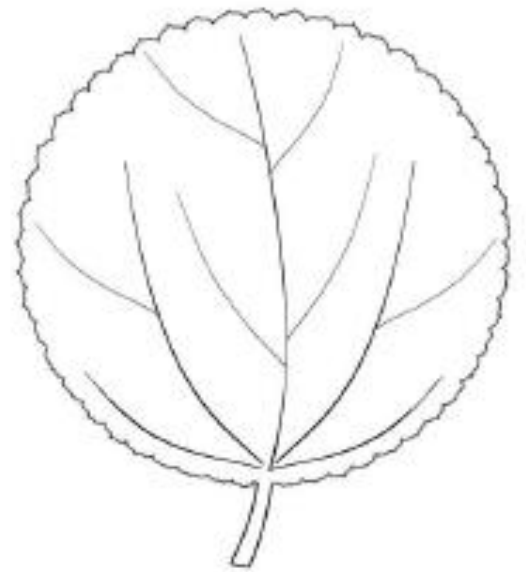
OBLANCEOLATE



OBLONG

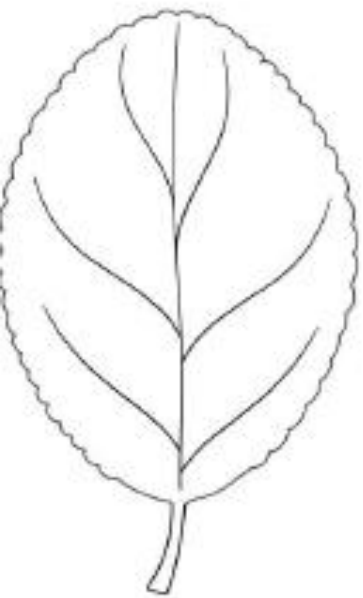


OBOVATE

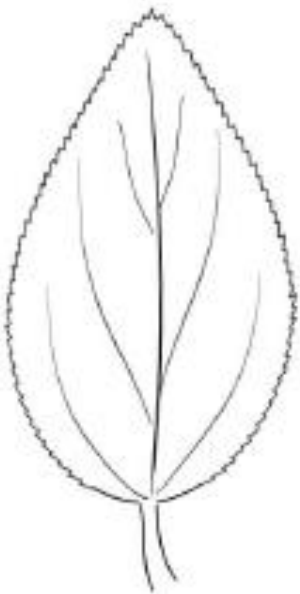


ORBICULAR

LEAF SHAPES



OVAL



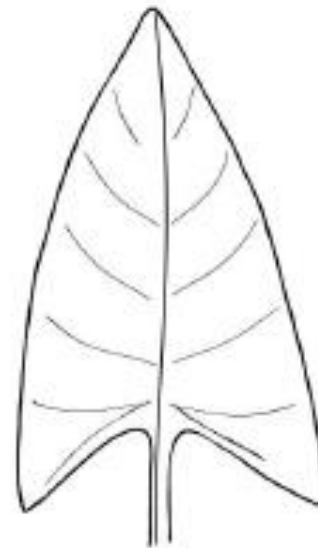
OVATE



RENIFORM



RUNCINATE



SAGITTATE



SPATULATE

Laboratory



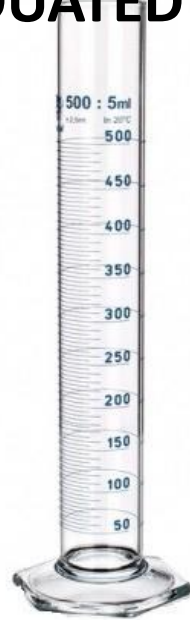


Magnifying glass



Volumetric flask

GRADUATED CYLINDER



measuring many
different
volumes

FUNNEL



transfer
of
liquids

Test tube



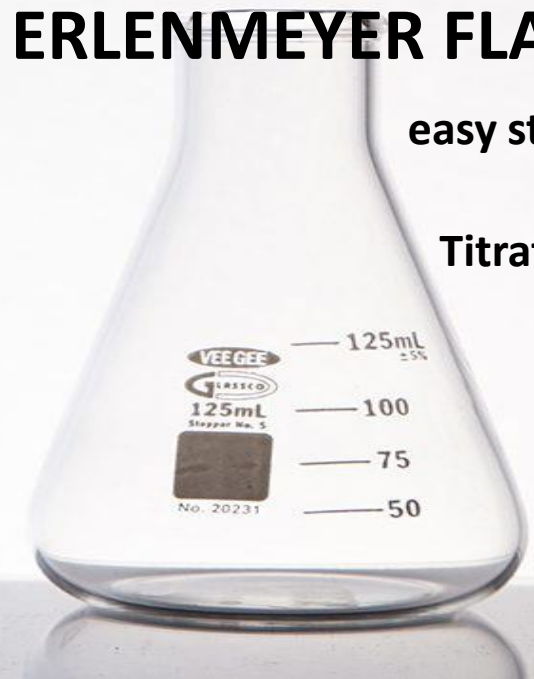
hold and mix
small
samples

VIAL WITH CAP



hold small
portions
of samples

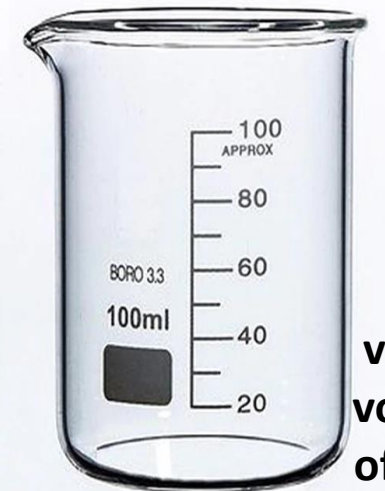
ERLENMEYER FLASK



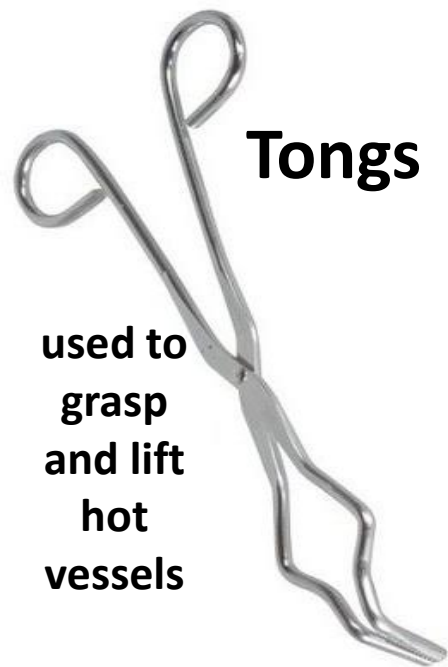
easy stirring

Titration

Beaker



hold
varying
volumes
of liquid

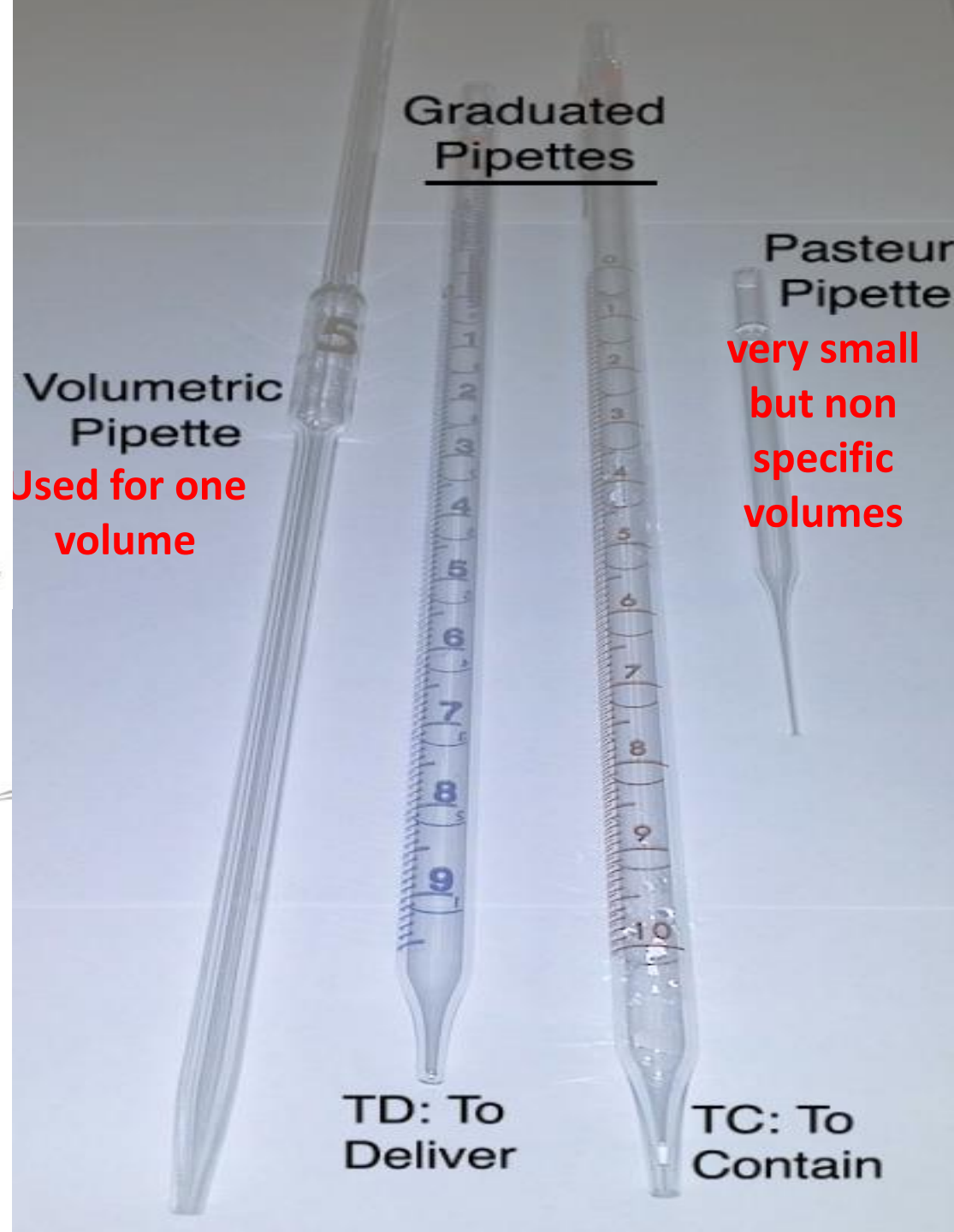


Tongs

used to
grasp
and lift
hot
vessels

Wash bottles

used for
cleansing
and
sterilization
purposes



Graduated
Pipettes

Volumetric
Pipette

Used for one
volume

Pasteur
Pipette

very small
but non
specific
volumes

TD: To
Deliver

TC: To
Contain

RING STAND
hold equipment



WATCH GLASS
evaporate a liquid



Dropper



Bunsen burner

produces
a single
open
flame

